

la r serve

APARTMENTS

PARIS

APARTMENT N 

10



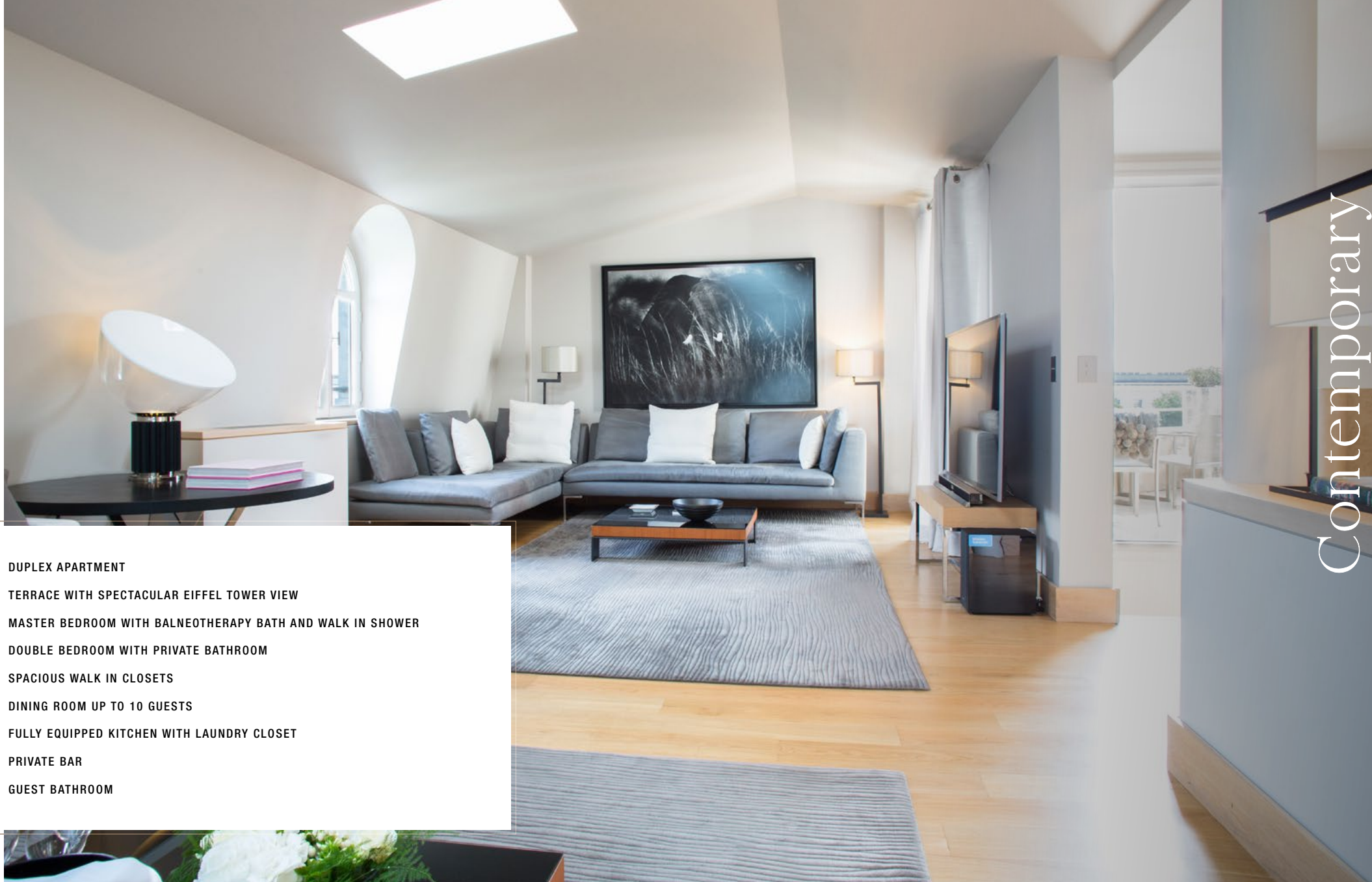
2 Bedrooms

WITH EIFFEL TOWER VIEW



SEE THE VIDÉO





DUPLEX APARTMENT

TERRACE WITH SPECTACULAR EIFFEL TOWER VIEW

MASTER BEDROOM WITH BALNEOTHERAPY BATH AND WALK IN SHOWER

DOUBLE BEDROOM WITH PRIVATE BATHROOM

SPACIOUS WALK IN CLOSETS

DINING ROOM UP TO 10 GUESTS

FULLY EQUIPPED KITCHEN WITH LAUNDRY CLOSET

PRIVATE BAR

GUEST BATHROOM

Contemporary

Duplex Apartment



1 600 sqf
150 sqm



5 people maximum
(4 sleeps
and 1 extra bed
on request)

1 King bed,
2 Queen bed,
1 extra bed on request

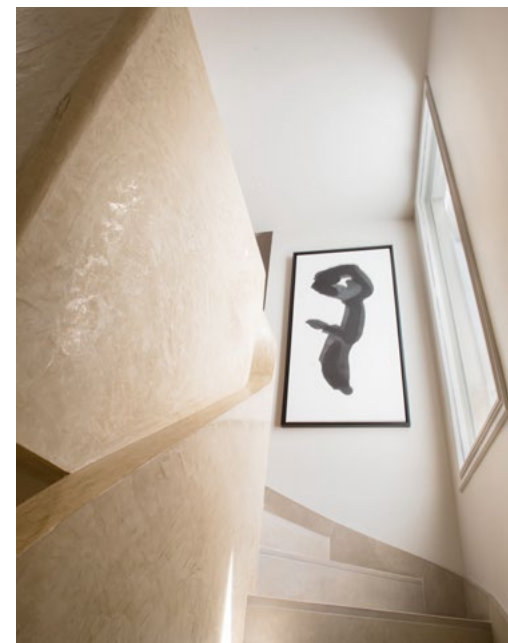


2 bedrooms



2 bathrooms

I ts familiar outline sparks a little frisson of pride in Parisians as soon as they catch sight of it. The Eiffel Tower will be the surprise guest of your intimate stay in the capital, delighting both young and old while providing charming company from sunrise through to midnight, when the great iron lady sparkles in the midnight blue sky.



It's like living a dream in central Paris...

This 2-bedroom luxury duplex apartment rentals laid out as a duplex even has its own private terrace with an unbeatable view of the Place du Trocadéro. The Eiffel Tower seems so close from up there that you almost get the impression it is shining just for you!

The perfect spot for an aperitif... Offering the best imaginable setting for a stay as a family or among friends, for a private or business trip, this spacious contemporary apartment features a light and airy atmosphere graced with an understated contemporary décor. Each morning, the housekeeper provides a personalized breakfast, while the other tailor-made services enable you to revel in complete freedom...











Entirely at home, with the Eiffel Tower as a neighbor. Free from daily cares, simply feeling good. Allowing yourself to be guided in a discovery of a privileged and intensely private side of Paris. Enjoying behind-the-scenes access to key historical and cultural sites. Organizing exclusive receptions. Spending time as a family or among

friends...Your stay in La Réserve Paris - Apartments can be modulated in tune with your wishes and experienced with a blend of elegance and simplicity. We will do everything in our power to personalize your stay with special touches or treats according to your tastes and desires. Feel free to communicate your preferences at the time of booking.



Your stay in a La Réserve Paris - Apartment includes the following services:

- Dedicated butler 24/7
- Concierge service 24/7
- Dedicated housekeeper to serve your breakfast and handle your daily shopping, twice-daily housekeeping, as well as laundry and ironing. Complimentary cleaning and pressing for personal clothes
- Groceries, vegetable basket, tea & coffee selection, soft drinks and snacks available upon your arrival
- À la carte breakfast served in your apartment
- A car is available to shuttle you between your apartment and La Réserve Paris – Hotel and Spa located on Avenue Gabriel to make the most of:
 - the Spa Nescens, the fitness studio, the 16-meter pool and the steam room
 - the Michelin two-starred Le Gabriel restaurant and the contemporary one La Pagode de Cos
 - the Duc de Morny Library and the Bar Le Gaspard
- Valet parking service – indoor car park
- 24/7 security guard
- WiFi
- Newspapers on request

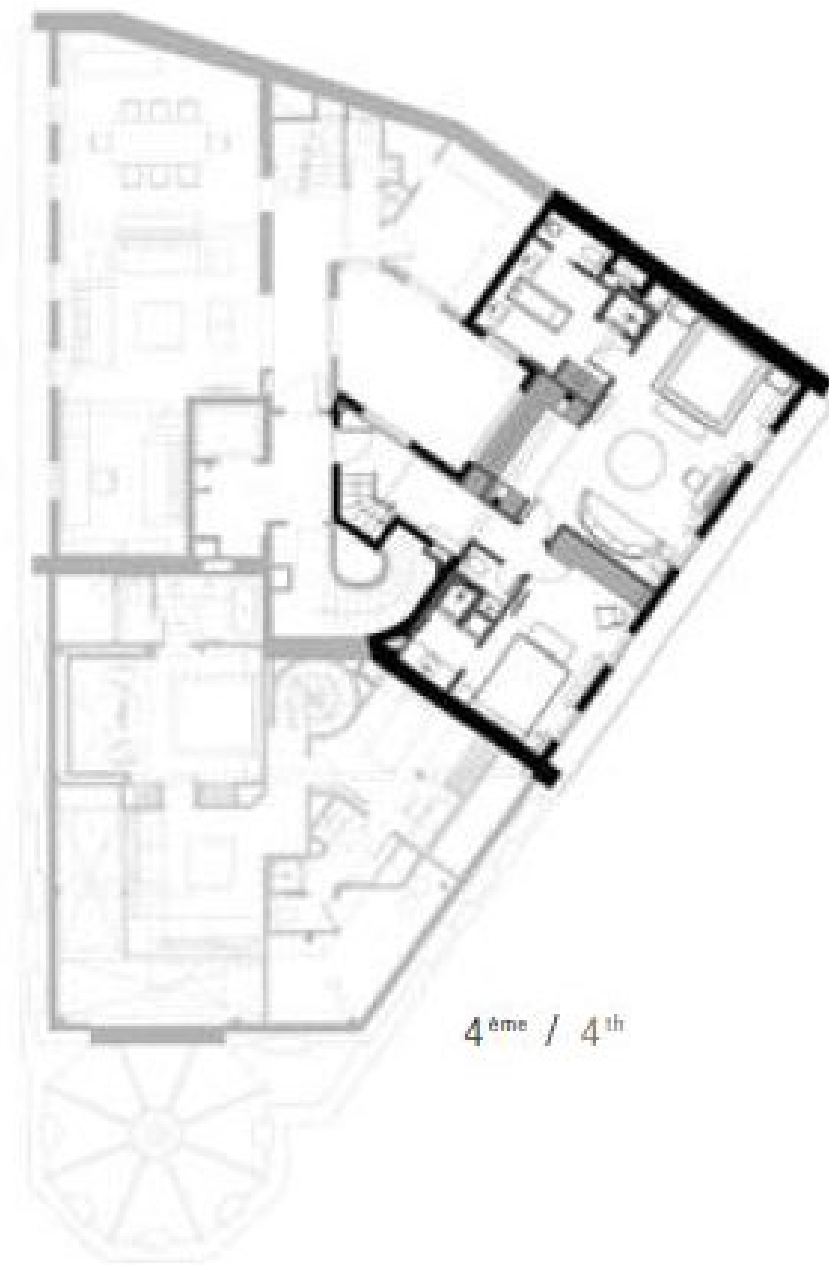
Examples of additional services available at a supplementary charge, along with a reminder that honoring your requests is an absolute priority for us:

- Limousine service
- Private chef and on request chef Jérôme Banclet, Michelin two-starred chef of Le Gabriel restaurant to cater in your apartment
- Massages and beauty treatments, hairdresser in your apartment
- Sports coach available for training sessions in your apartment or a Boot Camp in the Trocadéro gardens, at the foot of the Eiffel Tower
- Tickets for Roland Garros
- Personalized picnics and bicycles available for setting off to explore Paris, either as the fancy takes you or following the advice provided by our concierge
- For children, a daytime activity leader to take care of them and organize an age-adjusted program for discovering Paris; a babysitter in the evening

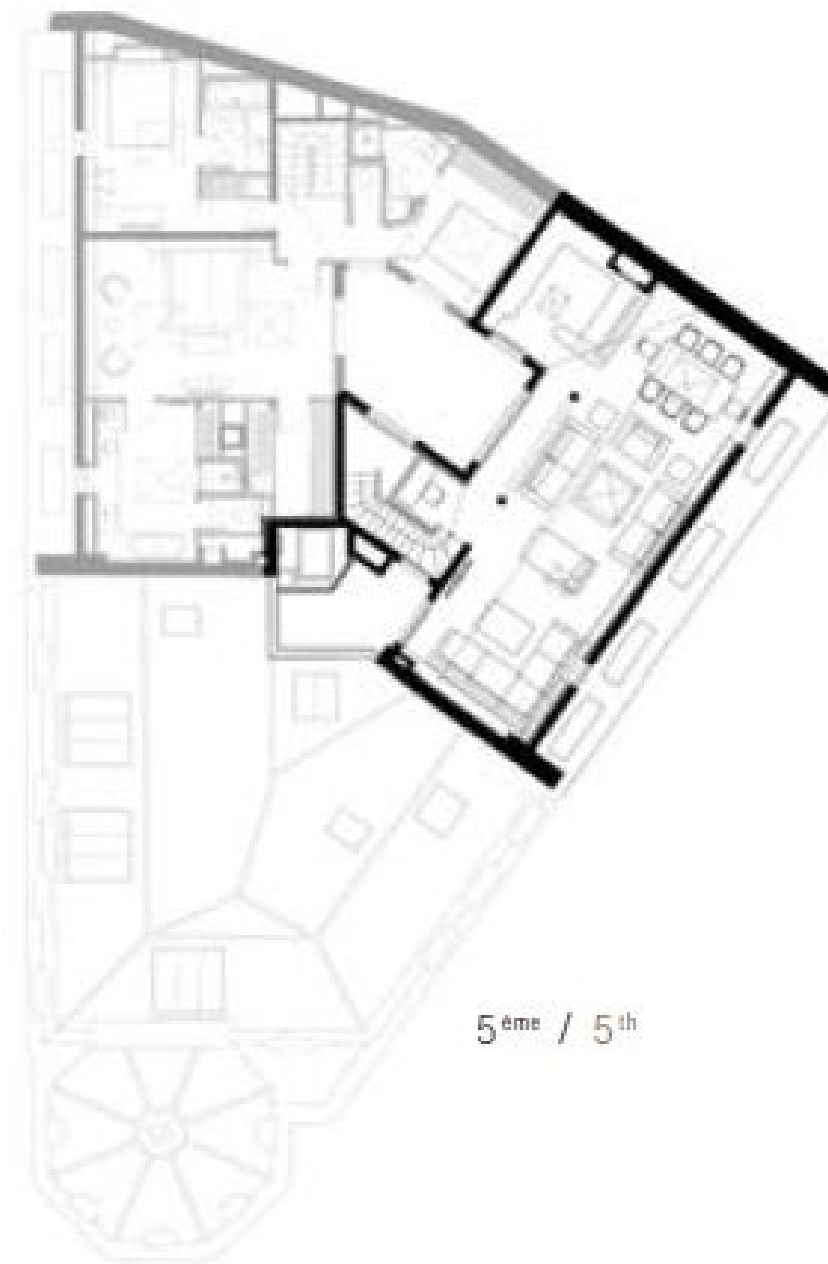
For long stays, there is also the possibility of decorating the apartment with original works of art according to your tastes, of setting up a fitness or home cinema area, of enhancing it with a personalized library...

Floor

plan



4^{ème} / 4th



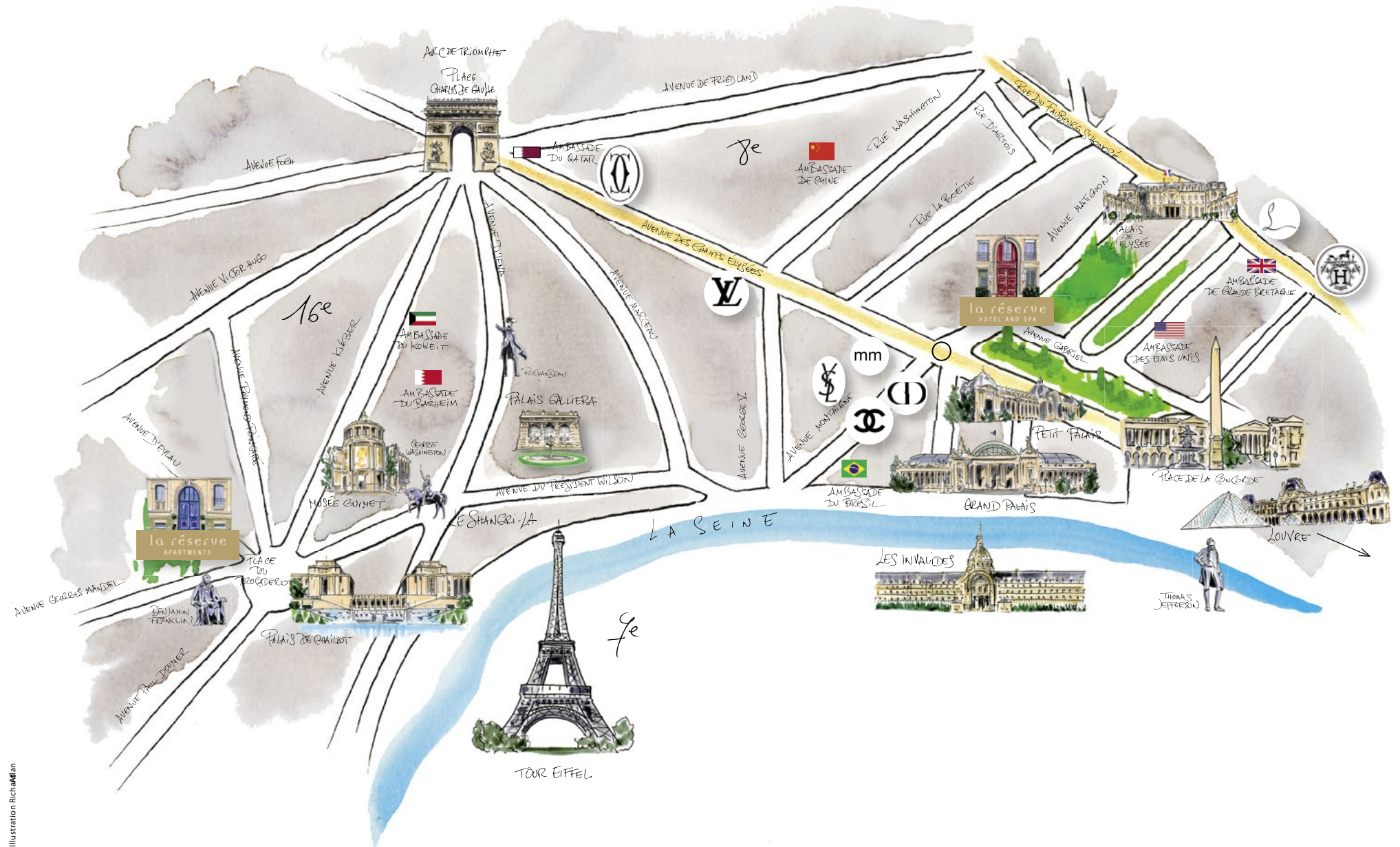
5^{ème} / 5th

Paris

by excellence

A majestic urban mansion jutting out like the bow of an ocean liner onto the Place du Trocadéro, at the corner of Avenue Georges Mandel and Avenue d'Eylau, the most elegant district in Paris. A strategic location facing the Trocadéro Gardens and the Eiffel Tower.

Illustration: Richard J. Allan





LA RÉSERVE PARIS APARTMENTS

10 place du Trocadéro, 3 avenue d'Eylau · 75116 Paris · France

T +33 (0)1 58 36 60 00 · reservations@lreserve-paris.com · www.lreserveparisapartments.com

www.michelreybier.com